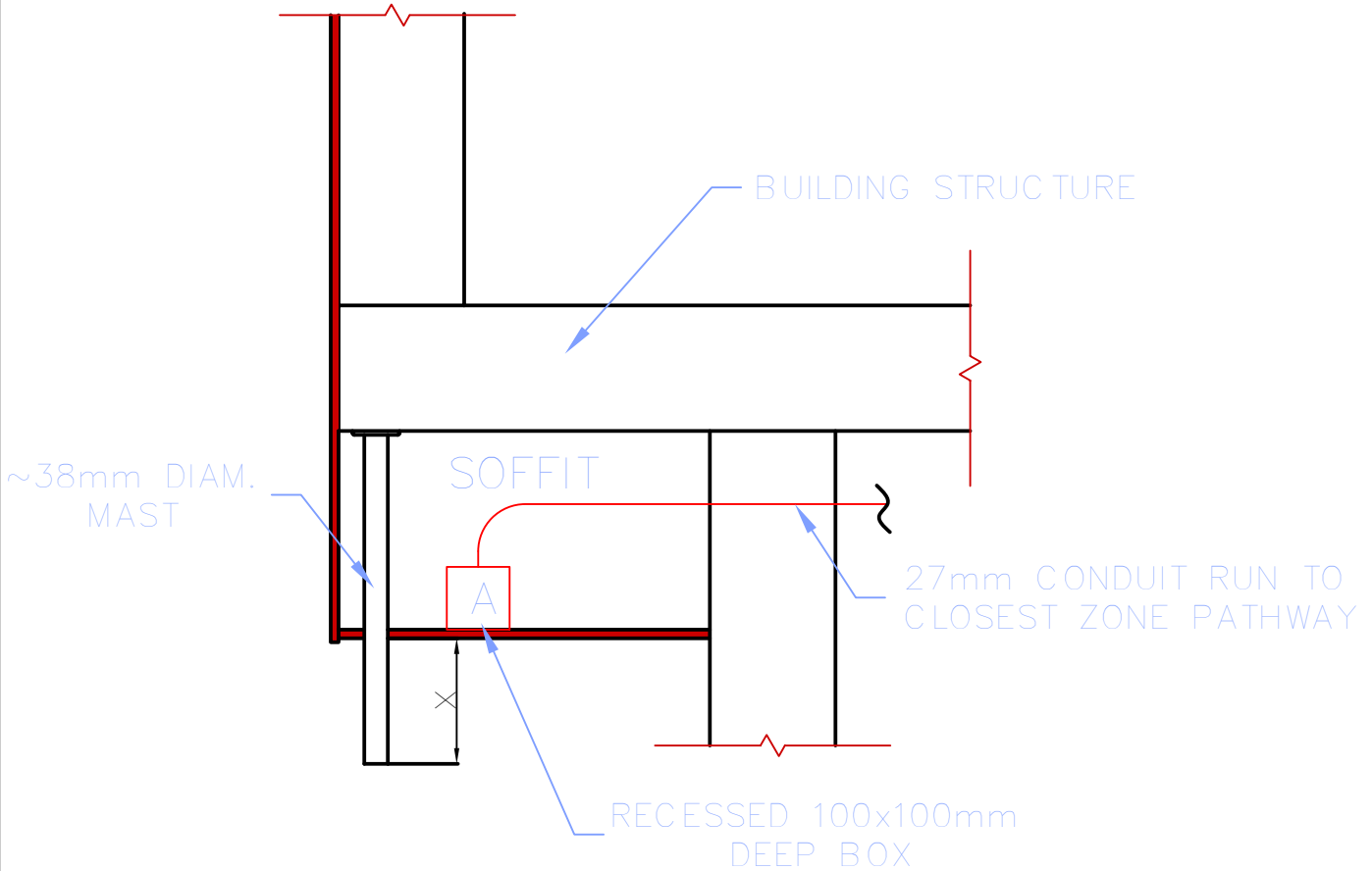


NOTES

1. OUTLET BOX 'A' – FLUSH MOUNT, ACCESSIBLE FROM OUTSIDE SOFFIT
2. MAST LENGTH 'X' MUST BE A MIN. 300mm, MAX. 450mm LENGTH CLEAR OF SOFFIT
3. ~38mm DIAMETER MAST MADE FROM HOT DIPPED GALVANIZED STEEL OR ALUMINUM, CLOSED END
4. MAST TO BE FIRMLY ATTACHED TO BUILDING STRUCTURE AND CAPABLE OF SUPPORTING 18kg WEIGHT.
5. MAXIMUM HEIGHT OF SOFFIT INSTALLATIONS IS ~5500mm AFG



No.	BY	DATE	REVISIONS	App'd
Scale	NONE		BY	DATE
Sheet No.	1 of 1		Drawn	DE 22 FEB 16
			Check'd	TZ 24 FEB 16
UBC Project No.			Design'd	
			Approv'd	

Building/Facility Name

WIRELESS MESH
SOFFIT MAST MOUNT



This drawing and its contents are confidential, and are for the private information of the Client Name. It is not to be relied upon or used in whole or in part for other purposes or by or for the benefit of others without prior adaptation and specific written verification from UBC. bjtServices.



UNIVERSITY OF BRITISH COLUMBIA

File No.

ITSTD-54

Rev.

0