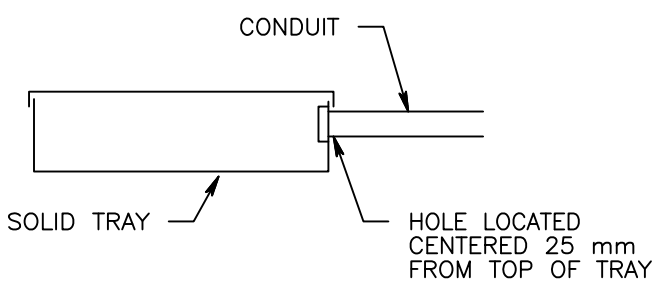
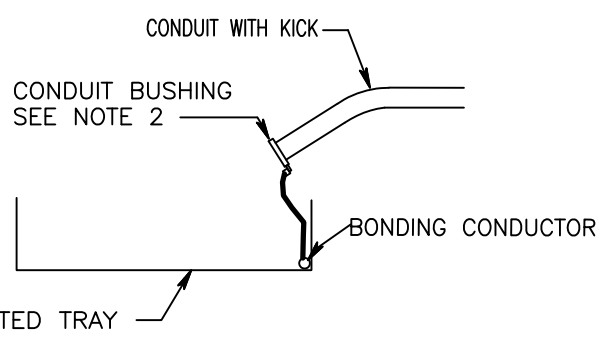


TYPICAL RISER DIAGRAM



DETAIL A - CONDUIT TO SOLID TRAY



DETAIL B - CONDUIT TO VENTILATED TRAY

NOTES:

- FOR RESIDENTIAL BUILDINGS CONSULT ITSTD19
- IF CONDUIT MOUNTING BRACKET IS NOT USED ON VENTILATED TRAY, USE GROUNDING BUSHING TO GROUND CONDUIT WITH A #12 AWG WIRE TO THE TRAY BONDING CONDUCTOR.

				Building/Facility Name	
No.	BY	DATE	REVISIONS	App'd	
Scale		NONE		BY	DATE
Sheet No.		1 of 1		Drawn	MET 05 MAR 04
UBC Project No.				Check'd	TZ 5 FEB 14
				Design'd	
				Approv'd	B. MACDONALD-RCDD 15 FEB 14
STACKED COMMUNICATIONS ROOM & PATHWAY IN ACADEMIC BLDGS. (TYP.)					

This drawing and its contents are confidential, and are for the private information of the Client Name. It is not to be relied upon or used in whole or in part for other purposes or by or for the benefit of others without prior adaptation and specific written verification by UBC, Information Technology.

UNIVERSITY OF BRITISH COLUMBIA

File No. ITSTD-18 Rev. 0